

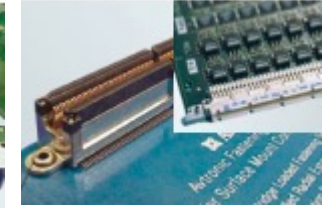
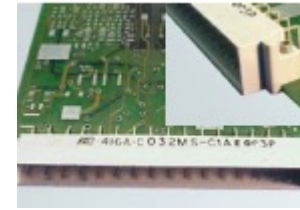
Lokgator® Speed Fasteners

Speed fasteners with a bulbed tail providing consistent high clamp and shear. Lokgator Speed Fasteners work best for assembly applications involving plastic, metal, aluminum alloy and similar materials.

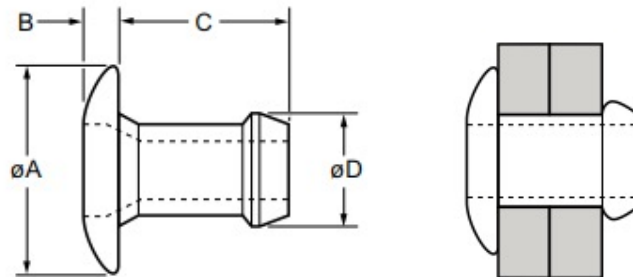


Key features and benefits

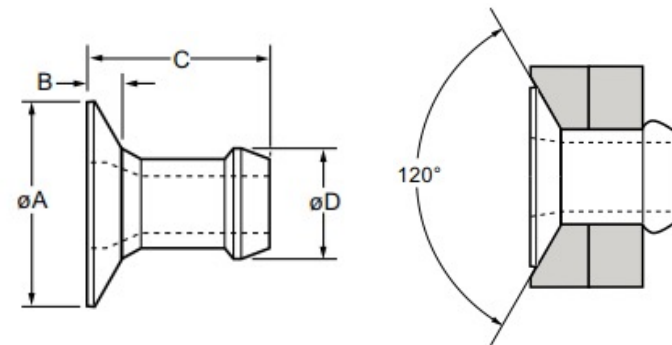
- Bulbed tail and foreshortening of the fastener during installation ensures high clamp
- Bulbed tail and large head form provide a large bearing area for soft materials
- Tapered tail for ease of hole entry
- Expands radially during installation to ensure maximum hole fill
- Lower in-place costs than welding or nail rivets
- Hot tin dipped brass option for ease of soldering and good electrical continuity
- Stainless Steel option for applications subject to high temperatures or corrosion
- Placed using a unique repetition mandrel system for highspeed assembly
- Can be bowl fed for larger volume applications using automated equipment
- Perfect alternative for Briv® rivet with competitive cost



Dome Head





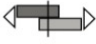

Countersunk





Lokgator®





Speed Fasteners

Ød	 Grip Range		 Hole Dia	ØA +0.4/-0.4	B Max	C Max	ØD Max	 Shear Strength KN Nom	 Tensile Strength KN Nom	Part Number	Material	Head Style
	Min	Max										
3.2mm (1/8")	0.64	1.91	3.26-3.34	6.20	0.99	3.86	3.14	0.70	1.30	LKSF-AA-0403	Aluminum Alloy	Dome
	1.14	2.42				4.37				LKSF-AA-0404	Aluminum Alloy	Dome
	1.65	2.87				4.87				LKSF-AA-0405	Aluminum Alloy	Dome
	2.15	3.43				5.39				LKSF-AA-0406	Aluminum Alloy	Dome
	3.17	4.45				6.41				LKSF-AA-0408	Aluminum Alloy	Dome
	4.19	5.47				7.42				LKSF-AA-0410	Aluminum Alloy	Dome
	5.20	6.48				8.44				LKSF-AA-0412	Aluminum Alloy	Dome
	6.22	7.50				9.45				LKSF-AA-0414	Aluminum Alloy	Dome
	7.24	8.51				10.46				LKSF-AA-0416	Aluminum Alloy	Dome
	3.2mm (1/8")	0.64				1.91				3.26-3.34	6.20	0.99
1.14		2.42	4.37	LKSF-CS-0404	Low Carbon Steel	Dome						
1.65		2.87	4.87	LKSF-CS-0405	Low Carbon Steel	Dome						
2.15		3.43		LKSF-CS-0406	Low Carbon Steel	Dome						
3.17		4.45	6.41	LKSF-CS-0408	Low Carbon Steel	Dome						
4.19		5.47	7.42	LKSF-CS-0410	Low Carbon Steel	Dome						
5.20		6.48	8.44	LKSF-CS-0412	Low Carbon Steel	Dome						
6.22		7.50	9.45	LKSF-CS-0414	Low Carbon Steel	Dome						
7.24		8.51	10.46	LKSF-CS-0416	Low Carbon Steel	Dome						
3.2mm (1/8")		1.14	2.42	3.27-3.34	6.20	0.99	4.37	3.16	1.30			
	2.15	3.43	5.39				LKSF-SS-0406			Stainless Steel	Dome	
	3.17	4.45	6.41				LKSF-SS-0408			Stainless Steel	Dome	
	4.19	5.47	7.42				LKSF-SS-0410			Stainless Steel	Dome	
	5.20	6.48	8.44				LKSF-SS-0412			Stainless Steel	Dome	



Lokgator®



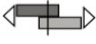

Speed Fasteners

Ød	 Grip Range		 Hole Dia	ØA +0.4/-0.4	B Max	C Max	ØD Max	 Shear Strength KN Nom	 Tensile Strength	Part Number	Material	Head Style
	Min	Max										
3.2mm (1/8")	1.52	2.79	3.26-3.34	5.50	0.89	4.77	3.17	0.70	1.30	LKSF-AA-0406C	Aluminum Alloy	Countersunk
	2.54	3.81				5.79				LKSF-AA-0407C	Aluminum Alloy	Countersunk
	3.56	4.83				6.81				LKSF-AA-0408C	Aluminum Alloy	Countersunk
	4.57	5.84				7.82				LKSF-AA-0410C	Aluminum Alloy	Countersunk
	5.59	6.86				8.84				LKSF-AA-0411C	Aluminum Alloy	Countersunk
3.2mm (1/8")	1.52	2.79	3.26-3.34	5.50	0.76	4.77	3.17	0.90	1.60	LKSF-CS-0406C	Low Carbon Steel	Countersunk
	2.54	3.81				5.79				LKSF-CS-0407C	Low Carbon Steel	Countersunk
	3.56	4.83				6.81				LKSF-CS-0408C	Low Carbon Steel	Countersunk
	4.57	5.84				7.82				LKSF-CS-0410C	Low Carbon Steel	Countersunk
	5.59	6.86				8.84				LKSF-CS-0411C	Low Carbon Steel	Countersunk
4.0mm (5/32")	1.57	2.93	3.97-4.04	7.90	0.99	4.91	3.88	1.10	1.70	LKSF-AA-0505	Aluminum Alloy	Dome
	2.15	3.43				5.41				LKSF-AA-0506	Aluminum Alloy	Dome
	2.66	3.94				5.92				LKSF-AA-0507	Aluminum Alloy	Dome
	3.68	4.96				6.94				LKSF-AA-0509	Aluminum Alloy	Dome
	4.69	5.97				7.95				LKSF-AA-0511	Aluminum Alloy	Dome
	5.71	6.99				8.97				LKSF-AA-0513	Aluminum Alloy	Dome
	6.73	8.00				9.98				LKSF-AA-0515	Aluminum Alloy	Dome
	7.75	9.02				11.00				LKSF-AA-0517	Aluminum Alloy	Dome
	1.57	2.93				3.97-4.04				7.90	0.99	4.91
2.15	3.43	5.41	LKSF-CS-0506	Low Carbon Steel	Dome							
2.66	3.94	5.92	LKSF-CS-0507	Low Carbon Steel	Dome							
3.68	4.96	6.94	LKSF-CS-0509	Low Carbon Steel	Dome							
4.69	5.97	7.95	LKSF-CS-0511	Low Carbon Steel	Dome							
5.71	6.99	8.97	LKSF-CS-0513	Low Carbon Steel	Dome							
6.73	8.00	9.98	LKSF-CS-0515	Low Carbon Steel	Dome							
7.75	9.02	11.00	LKSF-CS-0517	Low Carbon Steel	Dome							



Lokgator®




Speed Fasteners

Ød	 Grip Range		 Hole Dia	ϕA +0.4/-0.4	B Max	C Max	ϕD Max	 Shear Strength KN Nom	 Tensile Strength KN Nom	Part Number	Material	Head Style
	Min	Max										
4.0mm (5/32")	1.57	2.93	3.97-4.04	7.90	0.99	4.91	3.87	2.40	3.50	LKSF-SS-0505	Stainless Steel	Dome
	2.15	3.43				5.41				LKSF-SS-0506	Stainless Steel	Dome
	2.66	3.94				5.92				LKSF-SS-0507	Stainless Steel	Dome
	3.68	4.96				6.94				LKSF-SS-0509	Stainless Steel	Dome
	4.69	5.97				7.95				LKSF-SS-0511	Stainless Steel	Dome
	5.71	6.99				8.97				LKSF-SS-0513	Stainless Steel	Dome
4.0mm (5/32")	1.57	2.93	3.97-4.04	6.50	1.02	5.18	3.90	1.10	1.70	LKSF-AA-0505C	Aluminum Alloy	Countersunk
	2.15	3.43				5.69				LKSF-AA-0506C	Aluminum Alloy	Countersunk
	2.66	3.94				6.19				LKSF-AA-0507C	Aluminum Alloy	Countersunk
	3.68	4.96				7.21				LKSF-AA-0509C	Aluminum Alloy	Countersunk
	4.69	5.97				8.22				LKSF-AA-0511C	Aluminum Alloy	Countersunk
	5.71	6.99				9.24				LKSF-AA-0513C	Aluminum Alloy	Countersunk
4.0mm (5/32")	1.57	2.93	3.97-4.04	6.50	1.02	5.18	3.90	1.60	2.80	LKSF-CS-0505C	Low Carbon Steel	Countersunk
	2.15	3.43				5.69				LKSF-CS-0506C	Low Carbon Steel	Countersunk
	2.66	3.94				6.19				LKSF-CS-0507C	Low Carbon Steel	Countersunk
	3.68	4.96				7.21				LKSF-CS-0509C	Low Carbon Steel	Countersunk
	4.69	5.97				8.22				LKSF-CS-0511C	Low Carbon Steel	Countersunk
	5.71	6.99				9.24				LKSF-CS-0513C	Low Carbon Steel	Countersunk
4.8mm (3/16")	1.65	3.30	4.85-4.93	9.40	1.17	5.39	4.77	1.50	2.70	LKSF-AA-0606	Aluminum Alloy	Dome
	2.03	3.94				6.10				LKSF-AA-0607	Aluminum Alloy	Dome
	3.68	5.21				7.37				LKSF-AA-0609	Aluminum Alloy	Dome
	4.95	6.48				8.64				LKSF-AA-0611	Aluminum Alloy	Dome
	6.22	7.75				9.91				LKSF-AA-0613	Aluminum Alloy	Dome
	7.49	9.02				11.18				LKSF-AA-0615	Aluminum Alloy	Dome
	8.76	10.29				12.45				LKSF-AA-0617	Aluminum Alloy	Dome
	10.03	11.56				13.46				LKSF-AA-0619	Aluminum Alloy	Dome



Lokgator®

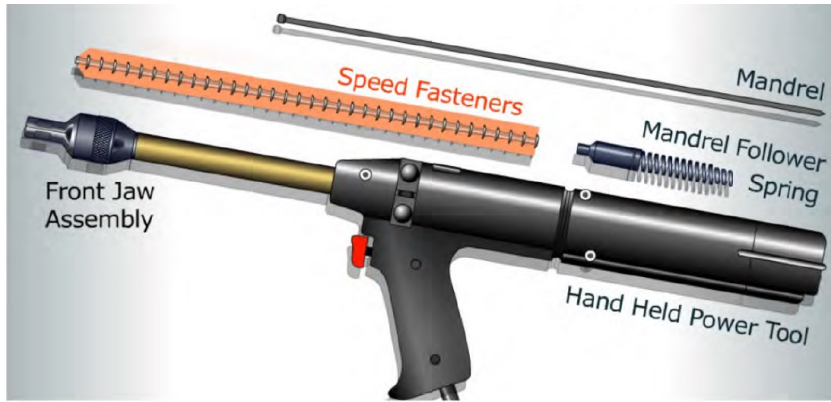
Speed Fasteners

Ød	Grip Range		 Hole Dia	$\varnothing A$ +0.4/-0.4	B Max	C Max	$\varnothing D$ Max	 Shear Strength KN Nom	 Tensile Strength KN Nom	Part Number	Material	Head Style
	Min	Max										
4.8mm (3/16")	1.65	3.30	4.85-4.93	9.40	1.17	5.39	4.79	2.20	3.70	LKSF-CS-0606	Low Carbon Steel	Dome
	2.03	3.94				6.10				LKSF-CS-0607	Low Carbon Steel	Dome
	3.68	5.21				7.37				LKSF-CS-0609	Low Carbon Steel	Dome
	4.95	6.48				8.64				LKSF-CS-0611	Low Carbon Steel	Dome
	6.22	7.75				9.91				LKSF-CS-0613	Low Carbon Steel	Dome
	7.49	9.02				11.18				LKSF-CS-0615	Low Carbon Steel	Dome
	8.76	10.29				12.45				LKSF-CS-0617	Low Carbon Steel	Dome
	4.8mm (3/16")	2.03				3.94				4.85-4.93	9.40	1.17
3.68		5.21	7.37	LKSF-SS-0609	Stainless Steel	Dome						
4.32		5.84	8.00	LKSF-SS-0610	Stainless Steel	Dome						
4.95		6.48	8.64	LKSF-SS-0611	Stainless Steel	Dome						
6.22		7.75	9.91	LKSF-SS-0613	Stainless Steel	Dome						
7.49		9.02	11.18	LKSF-SS-0615	Stainless Steel	Dome						
6.0mm		2.66	3.94	5.94-6.02	11.30	1.35	6.93	5.93	1.60			
	3.68	4.95	7.94				LKSF-AA-0809			Aluminum Alloy	Dome	
	4.70	5.96	8.96				LKSF-AA-0811			Aluminum Alloy	Dome	
	5.71	6.98	9.98				LKSF-AA-0813			Aluminum Alloy	Dome	
	6.73	7.99	10.99				LKSF-AA-0815			Aluminum Alloy	Dome	
	7.74	9.01	12.00				LKSF-AA-0817			Aluminum Alloy	Dome	
	6.0mm	2.66	3.94				5.94-6.02			11.30	1.35	6.93
3.68		4.95	7.94	LKSF-CS-0809	Low Carbon Steel	Dome						
4.70		5.96	8.96	LKSF-CS-0811	Low Carbon Steel	Dome						
5.71		6.98	9.98	LKSF-CS-0813	Low Carbon Steel	Dome						
6.73		7.99	10.99	LKSF-CS-0815	Low Carbon Steel	Dome						
7.74		9.01	12.00	LKSF-CS-0817	Low Carbon Steel	Dome						



Lokgator[®]

Speed Fasteners



Typical placing sequence

